

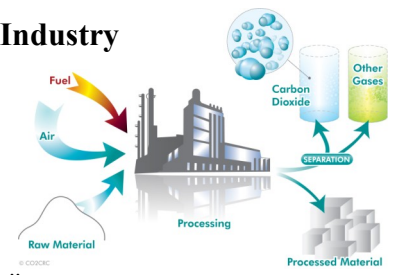


# Lobee Pump & Machinery Co.

## Industrial Pumps and Accessories

Since 1899...Noted for Highest Quality Pumps and Equipment

### Process Pumps for Industry



Completely 'Made in the USA', not just "designed, assembled and tested."

# MODEL LOX STAINLESS STEEL GEAR PUMPS

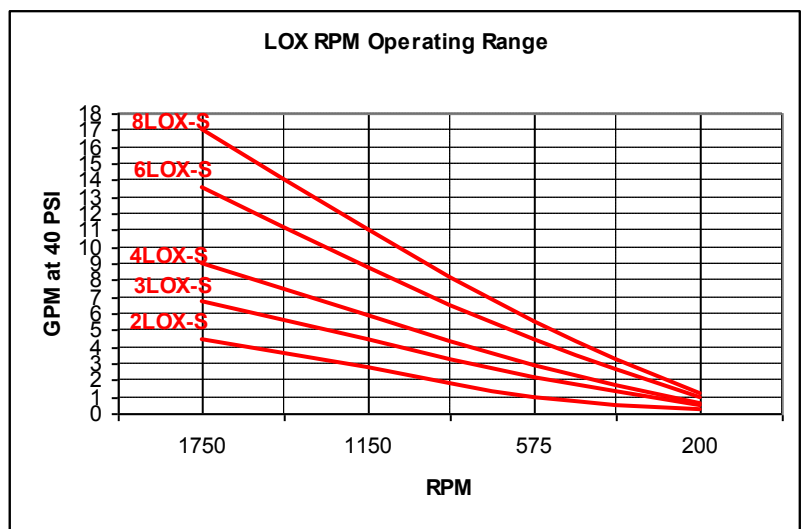
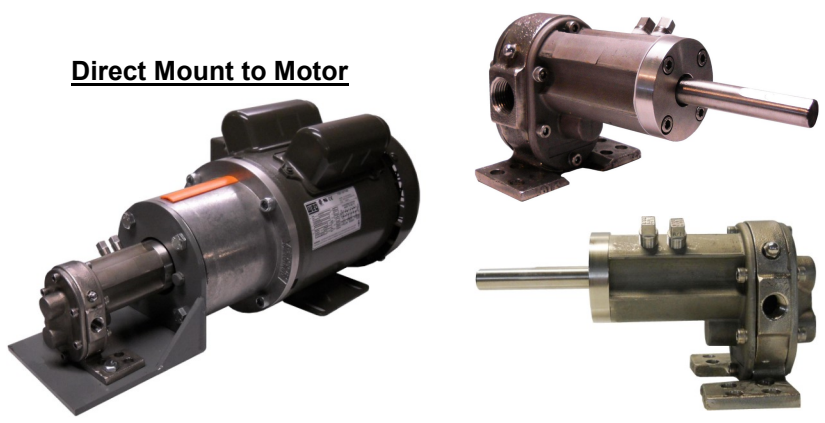
### Standard Features and Benefits

- 1) All 316 Stainless Steel Construction Standard
- 2) Composite Glass/PTFE Idler Gear
- 3) 5 Sizes- 1/4", 3/8", 1/2", 3/4", 1" NPT Ports
- 4) Bi-Directional Shaft Rotation, 200-1800 RPM Operating Range
- 5) Flows to 18 GPM
- 6) Operating Temperatures to 450 F+
- 7) Continuous Working Pressure to 100 PSI
- 8) 1/2" Shaft Diameter
- 9) Standard Mechanical Seal Options: John Crane™ Type 2106 Viton™, Type 1 High Temp Viton™ and Type 9 PTFE

### Options

- 1) 316L (Low Carbon), Carpenter 20 (Alloy 20), and Hastelloy™ (Alloy C-276) Construction Materials
- 2) Idler Gears—UHMW, PEEK 1000, PEEK HPV
- 3) FDA Compliant Materials: Rulon™ 641 Journal Bearings, PEEK 1000 Gears

### Direct Mount to Motor



SHAFT SPEED	PUMP MODEL	NPT Ports	GPM/100 RPM	~ CIR	0 PSI		20 PSI		40 PSI		60 PSI		80 PSI		100 PSI	
					GPM	HP	GPM	HP	GPM	HP	GPM	HP	GPM	HP	GPM	HP
1750 RPM	2LOX-S	1/4"	0.268	0.62	4.7	1/3	4.6	1/3	4.4	1/3	4.2	1/2	4	1/2	3.8	3/4
	3LOX-S	3/8"	0.418	0.97	7.3	1/3	7	1/3	6.7	1/3	6.2	1/2	6	1/2	5.5	3/4
	4LOX-S	1/2"	0.556	1.28	9.7	1/2	9.4	1/2	9	3/4	8.6	1	8.2	1	7.9	1 1/2
	6LOX-S	3/4"	0.836	1.93	14.6	1/2	14	1/2	13.5	1	13	1	12.4	1 1/2	11.8	1 1/2
	8LOX-S	1"	1.07	2.47	18.8	1/2	17.7	3/4	17	1	16.6	1 1/2	15.8	2	15	2
1150 RPM	2LOX-S	1/4"	0.268	0.62	3.1	1/4	2.9	1/4	2.7	1/4	2.5	1/3	2.3	1/3	2.1	1/2
	3LOX-S	3/8"	0.418	0.97	4.8	1/4	4.6	1/4	4.4	1/3	4.1	1/3	4	1/3	3.6	1/2
	4LOX-S	1/2"	0.556	1.28	6.6	1/4	6.2	1/4	5.9	1/3	5.6	1/2	5.4	3/4	5.2	3/4
	6LOX-S	3/4"	0.836	1.93	9.6	1/3	9.2	1/3	8.8	1/2	8.5	1/2	8.2	1	7.7	1
	8LOX-S	1"	1.07	2.47	12.4	1/3	11.6	1/2	11.1	3/4	10.9	1	10.3	1	9.8	1 1/2
575 RPM	2LOX-S	1/4"	0.268	0.62	1.54	1/4	1.2	1/4	0.9	1/4	0.7	1/4	0.6	1/4	0.5	1/4
	3LOX-S	3/8"	0.418	0.97	2.2	1/4	2.3	1/4	2.2	1/4	2.1	1/4	2	1/4	1.8	1/4
	4LOX-S	1/2"	0.556	1.28	3.2	1/4	3	1/4	2.9	1/3	2.8	1/3	2.7	1/3	2.6	1/2
	6LOX-S	3/4"	0.836	1.93	4.8	1/4	4.6	1/4	4.4	1/3	4.2	1/3	4	1/2	3.8	1/2
	8LOX-S	1"	1.07	2.47	6.2	1/4	5.8	1/4	5.5	1/2	5.3	1/2	5.1	1/2	4.9	3/4

Performance tested with 70 F Water. The viscosity and specific gravity of other fluids will vary results. Please contact factory for applications with estimated pressure above 100 PSI. Positive displacement gear pumps have excellent suction lift characteristics and are self priming when wetted. For vertical suction lift should pump run dry between uses, re-'wet' pump or use foot valve. Pump flow can be varied by varying input speed with pulleys, a gear reducer, or electric motor inverter (VFD). Never side load pump drive shaft, use a jackshaft/bearing arrangement.



# Lobee Pump & Machinery Co.

## Industrial Pumps and Accessories

Since 1899...Noted for Highest Quality Pumps and Equipment

### Family of Quality Products



Simple in Design, Long in Life, Very Repairable

# MODEL LOX STAINLESS STEEL GEAR PUMPS

### Markets

- Energy/Biofuel-deionized water, urea
- Chemical Processing-acids, corrosives
- Manufacturing-resins, coatings
- Food/Beverage-additives, oils
- Pharmaceutical-mixing chemicals, alcohols

### Applications

- High Temperature
- Acids
- Corrosives
- Chemicals
- Foods, Beverages
- Oils



### Standard Wetted Pump/Seal Materials:

- 316 Stainless Steel
- Composite Glass/PTFE
- Carbon, Rulon™
- Ceramic, Viton™

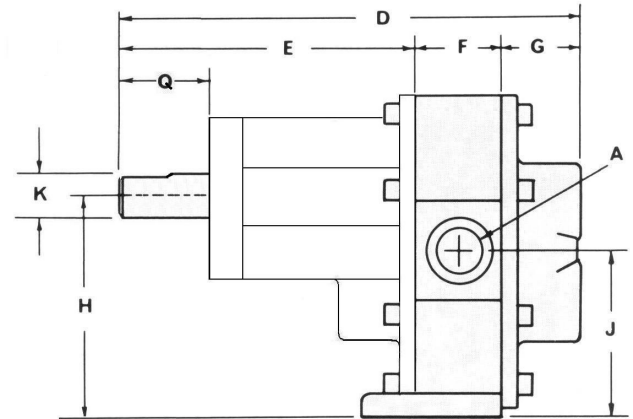
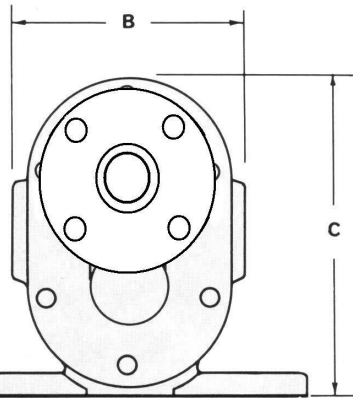
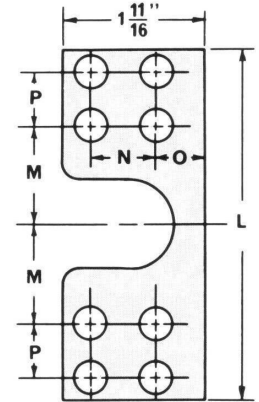
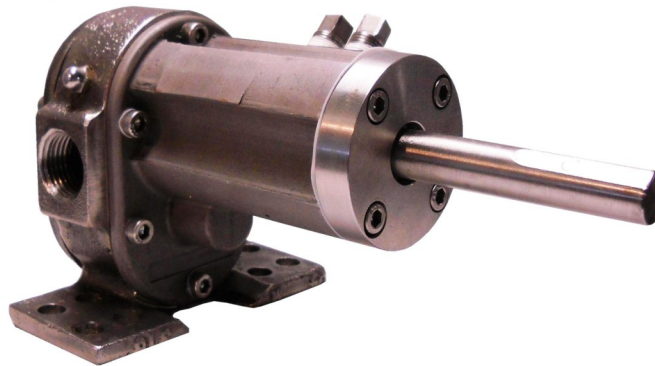
### Optional Wetted Pump Materials:

- 316L, Alloy-20, Hastelloy™, WM88
- Ketron® PEEK 1000/HPV
- UHMW

### Optional Mechanical Seal Materials:

- Tungsten or Silicon Carbide, Titanium
- 304 Stainless Steel, Alloy 20, C-276, Monel®
- Atlas®, Ethylene Propylene, Chloroprene

Our patented **LOX-S Stainless Steel Gear Pump** is made entirely of 316 Stainless Steel with Teflon liners, journal bearings and seal material. Its special design allows it to outperform other stainless steel pumps in demanding chemical, corrosive and high temperature applications. We offer several heavy duty mechanical seal solutions providing 'nearly' zero leak performance for the harshest operating environments. All Lobee LOX-S Stainless Steel pumps are field repairable. From the journal bearings to the shaft seal assemblies, all parts are easily replaced with minimal tools. Flows available to 18 gpm and pressures to 100 psi continuous duty.



\* Consult factory for operating temperatures and pressures that may exceed published limits

### Dimensional Specifications

MODEL	A	B	C	D	E	F	G	H	J	K	L	M	N	O	P	Q
2LOX-S	1/4"	2-9/16"	3-7/8"	7-23/32"	6-3/16"	21/32"	7/8"	2-15/32"	1-7/8"	1/2"	4"	1-1/8"	3/4"	9/16"	9/16"	2-3/4"
3LOX-S	3/8"	2-9/16"	3-7/8"	7-25/32"	6-3/16"	23/32"	7/8"	2-15/32"	1-7/8"	1/2"	4"	1-1/8"	3/4"	9/16"	9/16"	2-3/4"
4LOX-S	1/2"	2-13/16"	3-7/8"	7-13/16"	5-31/32"	31/32"	7/8"	2-15/32"	1-7/8"	1/2"	4"	1-1/8"	3/4"	9/16"	9/16"	2-13/32"
6LOX-S	3/4"	2-13/16"	3-7/8"	7-27/32"	5-1/2"	1-15/32"	7/8"	2-15/32"	1-7/8"	1/2"	4"	1-1/8"	3/4"	9/16"	9/16"	2-1/8"
8LOX-S	1"	3-1/16"	3-7/8"	8-1/2"	5-5/8"	2"	7/8"	2-15/32"	1-7/8"	1/2"	4"	1-1/8"	3/4"	9/16"	9/16"	2-1/4"