

BRONZE GEAR PUMPS

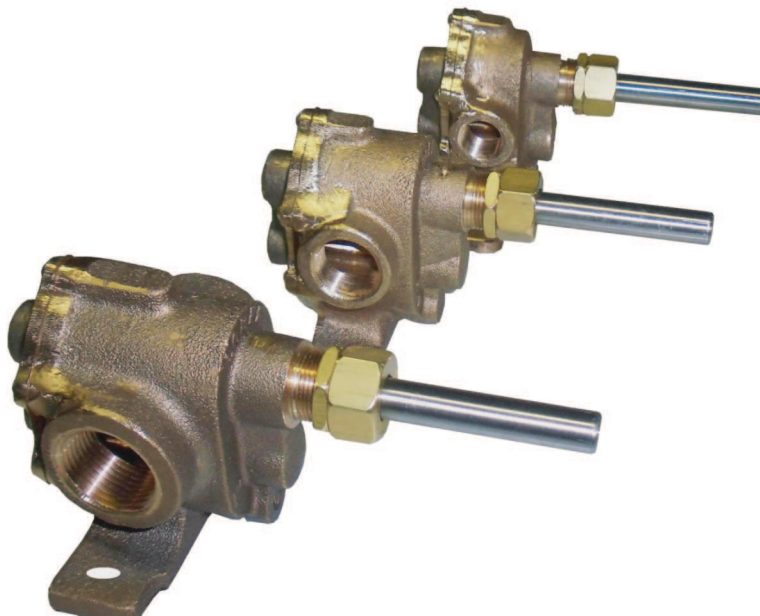
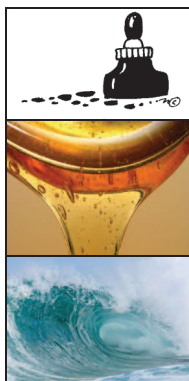
MODEL LOS

Markets

Agriculture-fertilizers, pesticides
Automotive-coolants, lubricants
Book Mfg-adhesives, glue
Construction & Mining-lubricants, fuels, coolants
Filtration System Pumps-portable, stationary
Food & Beverage-syrups, additives, oils
Furniture-adhesives, glue
Institutional (Hospitals, Schools)-Boiler feed pump
Machine Tool-coolant & lubricant circulation
Marine-bilge pump, fresh water
Mills-coolants, lubricants
Municipalities-liquids transfer
Power Plants & Utilities-coolants, lubricants, fuels
Printing-inks, solvents
Processing Plants-speed variable material transfer
Refineries-liquid transfer

Applications

Adhesives, Glue
Alcohols
Ethylene Glycol, Anti-Freeze
Fuels-Petrol, Diesel, Kerosene
Glycerin's
Heating Oils
Inks
Molasses
Salt Brine
Sea Water
Solvents
Syrups
Vegetable/Cooking Oils
Vinegars
Water-Tap, Grey, Soapy
Weed Killers



Standard Features and Benefits

- ✓ All Bronze Federalloy™
- ✓ 3 Sizes - 1/2", 3/4", 1" NPT Port Sizes
- ✓ Acrylic Graphite Packing
- ✓ Flows to 18 GPM
- ✓ Bi-Directional Rotation
- ✓ Temperature to 350 F
- ✓ Pressure to 100 PSI
- ✓ 1/2" Shaft Diameter, 416 SS

Performance and Sizing

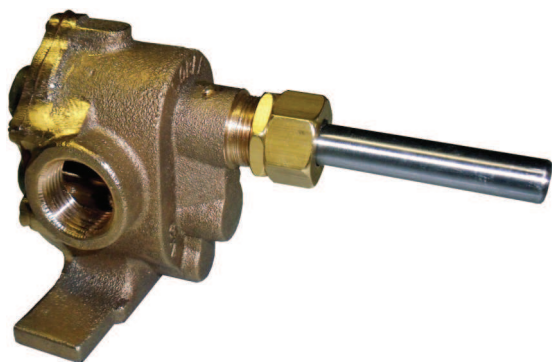
SHAFT SPEED	PUMP MODEL	NPT Ports	GPM/100 RPM		0 PSI		20 PSI		40 PSI		60 PSI		80 PSI		100 PSI	
				~ CIR	GPM	HP	GPM	HP	GPM	HP	GPM	HP	GPM	HP	GPM	HP
1750 RPM	4LOS	1/2"	0.556	1.28	9.7	1/2	9.4	1/2	9	3/4	8.6	1	8.2	1	7.9	1 1/2
	6LOS	3/4"	0.836	1.93	14.6	1/2	14	1/2	13.5	1	13	1	12.4	1 1/2	11.8	1 1/2
	8LOS	1"	1.070	2.47	18.8	1/2	17.7	3/4	17	1	16.6	1 1/2	15.8	2	15	2
1150 RPM	4LOS	1/2"	0.556	1.28	6.6	1/4	6.2	1/4	5.9	1/3	5.6	1/2	5.4	3/4	5.2	3/4
	6LOS	3/4"	0.836	1.93	9.6	1/3	9.2	1/3	8.8	1/2	8.5	1/2	8.2	1	7.7	1
	8LOS	1"	1.070	2.47	12.4	1/3	11.6	1/2	11.1	3/4	10.9	1	10.3	1	9.8	1 1/2
575 RPM	4LOS	1/2"	0.556	1.28	3.2	1/4	3	1/4	2.9	1/3	2.8	1/3	2.7	1/3	2.6	1/2
	6LOS	3/4"	0.836	1.93	4.8	1/4	4.6	1/4	4.4	1/3	4.2	1/3	4	1/2	3.8	1/2
	8LOS	1"	1.07	2.47	6.2	1/4	5.8	1/4	5.5	1/3	5.3	1/2	5.1	1/2	4.9	3/4

* Consult factory for operating temperatures and pressures that may exceed published limits

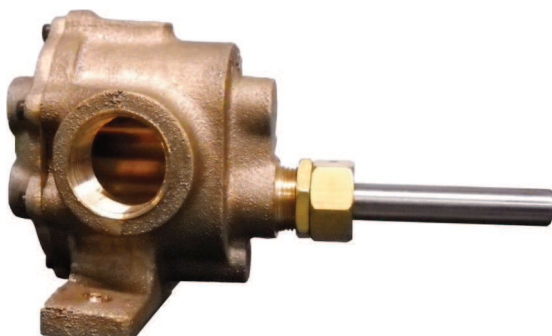


BRONZE GEAR PUMPS

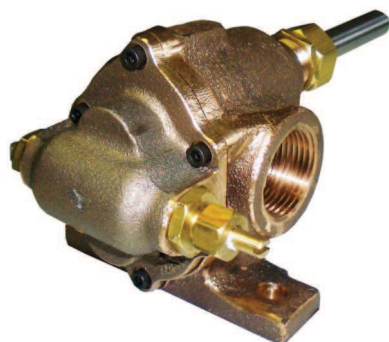
MODEL LOS



1" NPT with Standard Graphite Packing

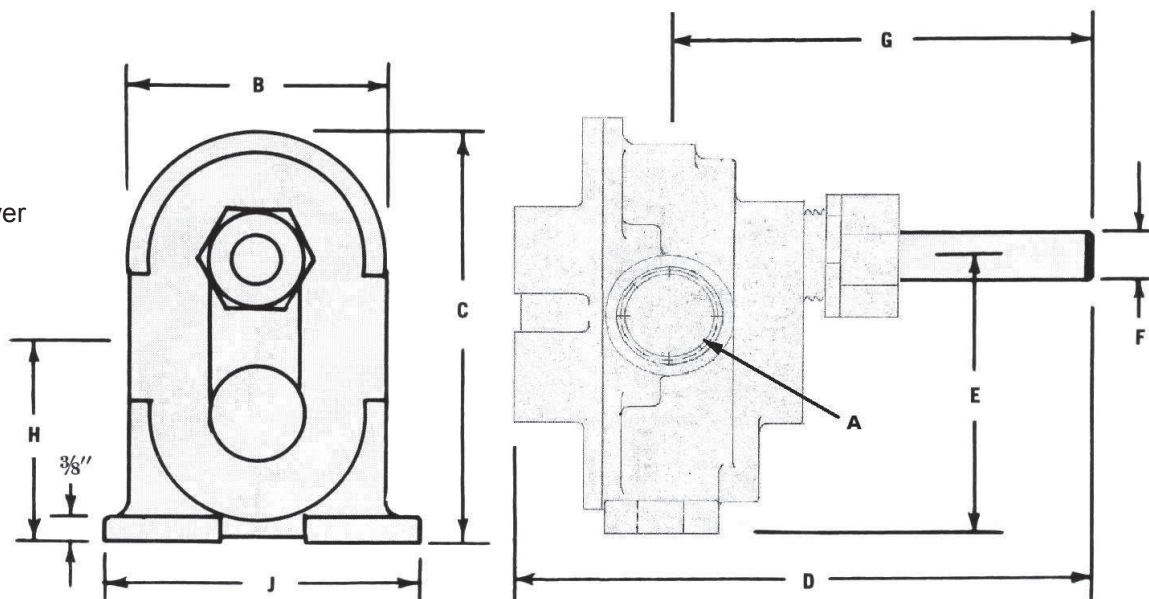
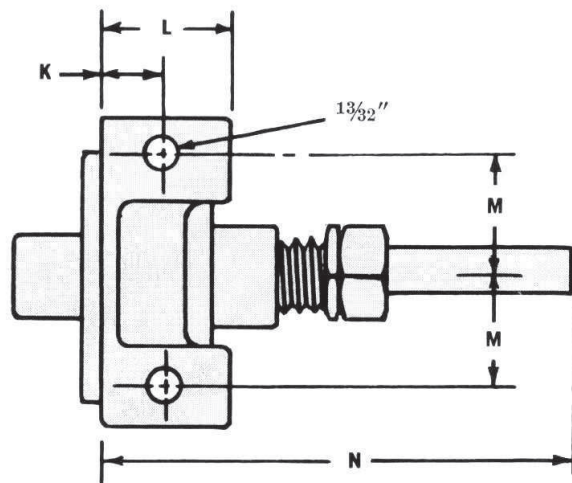


1" NPT 8LOS Bottom Shaft



With 0-100 PSI Relief Valve Cover

The **Lobee Model LOS Bronze Gear Pump** is recommended for forced feed oil lubrication, machine tool lubrication/cooling, salt water and many other industrial applications where non-abrasive liquids are transferred in and around plant and equipment. The pump shell and cover are bored to an extremely high degree of accuracy. The flange of the shell and surface of the cover are machine tooled to insure perfect alignment. Available with top or bottom single shaft or double shaft, integral relief valve, lip seal or standard carbon graphite packing. The Lobee LOS Bronze Gear pump is available in flows up to 17 gpm and continuous duty pressure to 100 psi. It will outperform the competition while delivering years of dependable service.



Dimensional Specifications

MODEL	A	B	C	D	E	F	G	H	J	K	L	M	N
4LOS	1/2"	2-13/16"	3-7/8"	6-1/4"	2-21/32"	1/2"	4-29/32"	2-1/16"	4"	17/32"	1-1/32"	1-1/2"	5-1/2"
6LOS	3/4"	2-3/4"	3-7/8"	6-3/4"	2-21/32"	1/2"	5-1/4"	2-1/16"	4"	17/32"	1-1/32"	1-1/2"	6"
8LOS	1"	2-3/4"	3-7/8"	7-1/4"	2-21/32"	1/2"	5-7/16"	2-1/16"	4"	3/4"	1-5/16"	1-1/2"	6-1/2"



BRONZE GEAR PUMPS

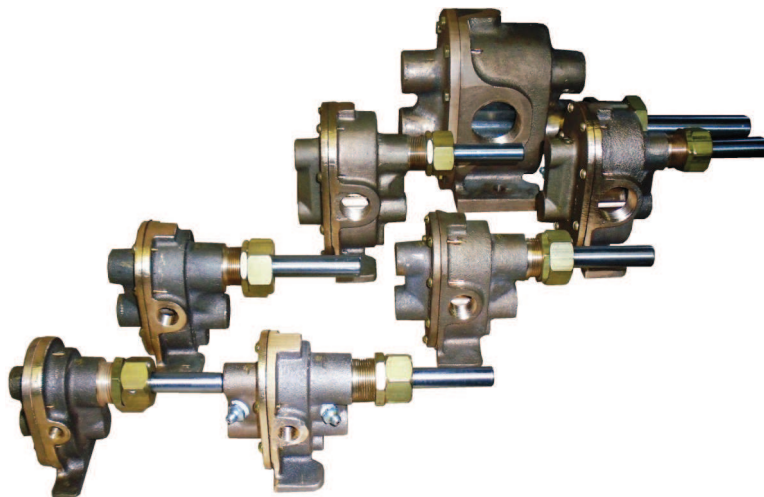
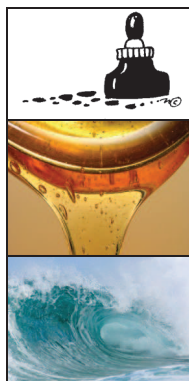
MODEL LOL - HEAVY DUTY

Markets

Agriculture-fertilizers, pesticides
Construction & Mining-lubricants, fuels, coolants
Food & Beverage-syrups, additives
Machine Tool-coolant & lubricant circulation
Marine-bilge pump, fresh water
Mills-coolants, lubricants
Municipalities-liquids transfer
Power Plants & Utilities-coolants, lubricants, fuels
Printing-inks, solvents
Refineries-liquid transfer
Filtration System Pumps

Applications

Adhesives, Glue
Alcohols
Ethylene Glycol, Anti-Freeze
Fuels-Petrol, Diesel, Kerosene
Glycerin's
Heating Oils
Inks
Molasses
Salt Brine
Sea Water
Solvents
Syrups
Vegetable/Cooking Oils
Vinegars
Water-Tap, Grey, Soapy
Weed Killers



Standard Features and Benefits

- 1) Federalloy™ Bronze Body and Gears
- 2) 416 Stainless Steel Drive and Idler Shaft
- 3) High Durability for Severe Service
- 4) Std Carbon Graphite Packing
- 5) Mechanical Shaft Seal is Standard Option
- 6) 0-1800 RPM Range of Operation, Flows to 90 GPM
- 7) Bi-Directional Shaft Rotation
- 8) Operating Temperatures to 400 F
- 9) Continuous Working Pressure to 150 PSI
- 10) 1/2", 5/8" & 1" Shaft Diameters

Performance and Sizing

SHAFT SPEED	PUMP MODEL	NPT Ports	GPM/100 RPM		0 PSI		20 PSI		40 PSI		60 PSI		80 PSI		100 PSI	
				~ CIR	GPM	HP	GPM	HP	GPM	HP	GPM	HP	GPM	HP	GPM	HP
1750 RPM	1LOL	1/8"	0.13	0.30	2.3	1/4	2.1	1/4	1.9	1/2	1.7	1/4	1.6	1/3	1.4	1/3
	2LOL	1/4"	0.268	0.62	4.7	1/4	4.6	1/4	4.4	1/3	4.2	1/2	4	1/2	3.8	3/4
	3LOL	3/8"	0.451	1.04	7.9	1/2	7.6	1/2	7.4	3/4	7.2	1	7	1	6.8	1 1/2
	4LOL	1/2"	0.622	1.44	10.9	1/2	10.5	3/4	10.2	1	9.7	1	9.5	1 1/2	9	2
	6LOL	3/4"	1.075	2.48	18.8	1	18	1 1/2	16.5	2	15.5	2	14.5	2 1/2	13	3
	8LOL	1"	1.266	2.92	22.1	1 1/2	21	2	20	2	19	3	18	3	16.5	5
1150 RPM	1LOL	1/8"	0.13	0.30	1.5	1/4	1.3	1/4	1.1	1/4	0.9	1/4	0.7	1/4	0.5	1/4
	2LOL	1/4"	0.268	0.62	3.1	1/4	2.9	1/4	2.7	1/4	2.5	1/4	2.3	1/3	2.1	1/2
	3LOL	3/8"	0.451	1.04	5.2	1/4	4.8	1/4	4.5	1/3	4.1	1/2	3.8	3/4	3.5	1
	4LOL	1/2"	0.622	1.44	7.2	1/4	6.8	1/3	6.4	1/2	6	3/4	5.6	1	5.2	1
	6LOL	3/4"	1.075	2.48	12.3	1/3	11.8	1/2	11.3	3/4	10.8	1	10.3	1 1/2	9.8	2
	8LOL	1"	1.266	2.92	14.5	1/2	14	3/4	13.5	1	13		12.5	2	12	3
575 RPM	1LOL	1/8"	0.13	0.30	0.75	1/4	0.7	1/4	0.6	1/4	0.5	1/4	0.4	1/4	0.3	1/4
	2LOL	1/4"	0.268	0.62	1.54	1/4	1.2	1/4	0.9	1/4	0.7	1/4	0.6	1/4	0.5	1/4
	3LOL	3/8"	0.452	1.04	2.6	1/4	1.8	1/4	1.2	1/4	0.9	1/3	0.8	1/3	0.7	1/2
	4LOL	1/2"	0.622	1.44	3.6	1/4	3.2	1/4	2.8	1/3	2.4	1/3	2	1/2	1.6	1/2
	6LOL	3/4"	1.075	2.48	6.2	1/4	5.9	1/3	5.6	1/2	5.3	3/4	5.1	1	4.9	1
	8LOL	1"	1.266	2.92	7.4	1/3	7	1/2	6.6	3/4	6.2	1	5.8	1	5.4	1
	10LOL	1-1/4"	3.44	7.95	19.8	1/2	17.9	3/4	15.8	1	13.8	1 1/2	11	2	9.1	3
	12LOL	1-1/2"	5.01	11.57	28.8	1	25.7	2	23	3	20	3	17.2	5	14	5

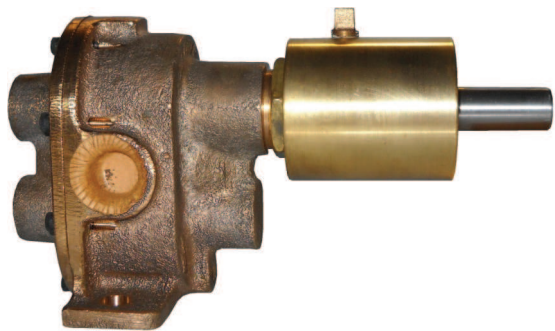
* Consult factory for operating temperatures and pressures that may exceed published limits



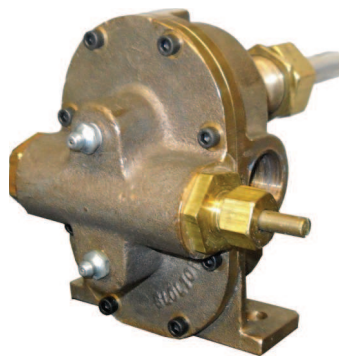
BRONZE GEAR PUMPS

MODEL LOL - HEAVY DUTY

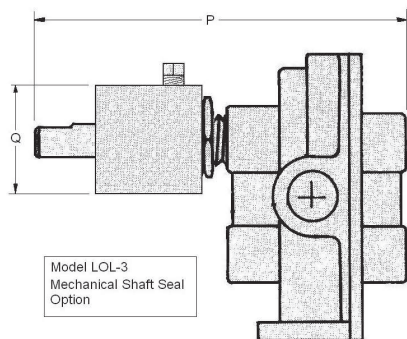
The **Lobee Model LOL Bronze Gear Pump** is designed for extra heavy duty performance in forced feed lubrication/cooling, fuel/solvent transfer, salt water, ink, glue pumping as well as many other industrial applications where non-abrasive liquids are transferred in and around plant and equipment. The Lobee Model LOL is designed for severe service where standard pumps will not do the job. Available with top or bottom single shaft or double shaft, integral relief valve, lip or mechanical seal and standard carbon graphite packing. Made completely of bronze, and to the most exacting standards of workmanship, the Model LOL pump is larger and heavier than standard pumps of equal intake diameters and has greater capacities...flows to 90 gpm and continuous duty pressures to 150 psi.



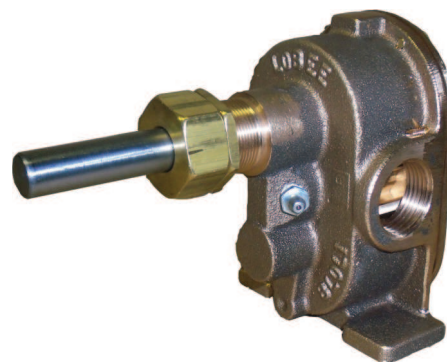
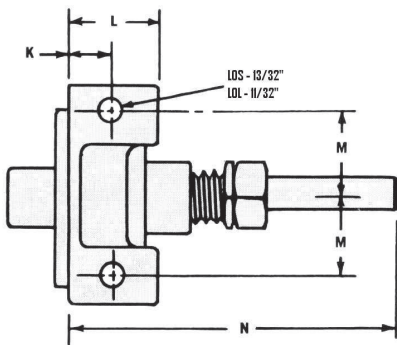
6LOL with Mechanical Seal



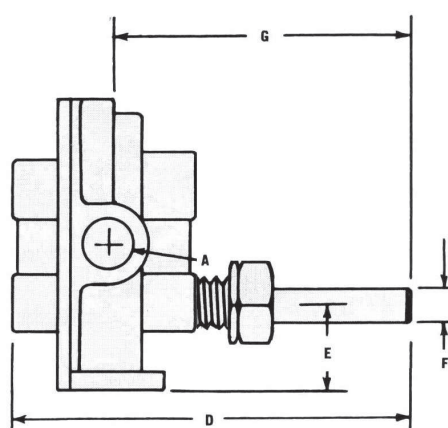
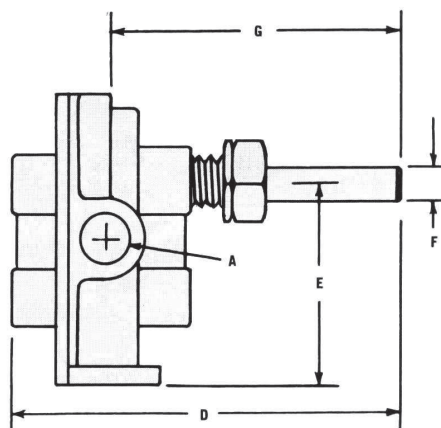
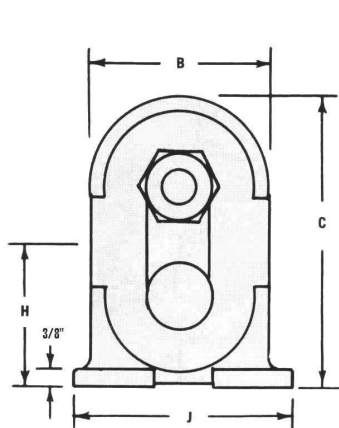
6LOL with Relief Valve Cover



Model LOL-3
Mechanical Shaft Seal
Option



3/4" NPT with Graphite Packing



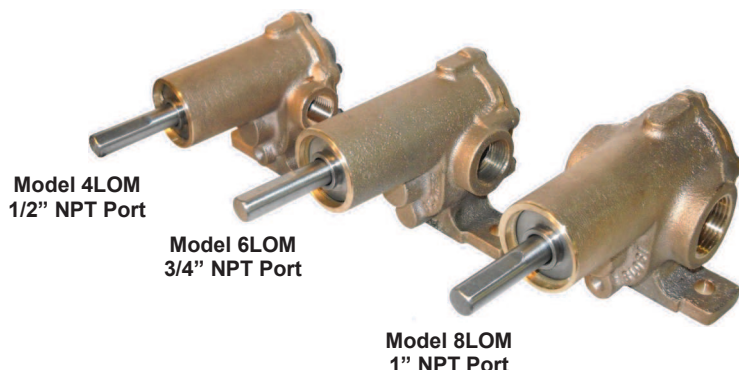
Dimensional Specifications

MODEL	A	B	C	D	E	F	G	H	J	K	L	M	N
1LOL	1/8"	2-3/16"	3-9/16"	5"	2-7/16"	1/2"	3-29/32"	1-27/32"	3"	11/32"	21/32"	1-1/8"	4-1/8"
2LOL	1/4"	2-3/8"	3-5/8"	6-7/16"	2-13/32"	1/2"	4-15/16"	1-3/4"	2-7/8"	3/4"	1-1/4"	1-1/8"	5-3/8"
3LOL	3/8"	2-5/8"	4"	7"	2-11/16"	5/8"	5-3/8"	1-15/16"	3-1/2"	5/8"	1-15/16"	1-3/8"	5-7/8"
4LOL	1/2"	2-5/8"	4"	7-3/8"	2-11/16"	5/8"	5-5/8"	1-15/16"	3-1/2"	5/8"	1-15/16"	1-3/8"	6-1/4"
6LOL	3/4"	3-3/8"	5-5/16"	7-3/8"	3-5/8"	5/8"	5-1/2"	2-5/8"	4-1/8"	3/4"	1-3/8"	1-1/2"	6-1/4"
8LOL	1"	3-3/8"	5-5/16"	7-5/8"	3-5/8"	5/8"	5-5/8"	2-5/8"	4-1/8"	34/64"	1-1/2"	1-1/2"	6-1/2"
10LOL	1-1/4"	4-5/8"	6-3/4"	12-13/16"	4-7/16"	1"	9-3/4"	3-5/16"	5-1/4"	1-1/4"	2-1/4"	1-7/8"	10-5/16"
12LOL	1-1/2"	4-5/8"	6-3/4"	13-7/8"	4-7/16"	1"	10-5/8"	3-5/16"	5-1/4"	1-5/16"	3-1/4"	2-1/16"	12"



New Model LOM Gear Pump

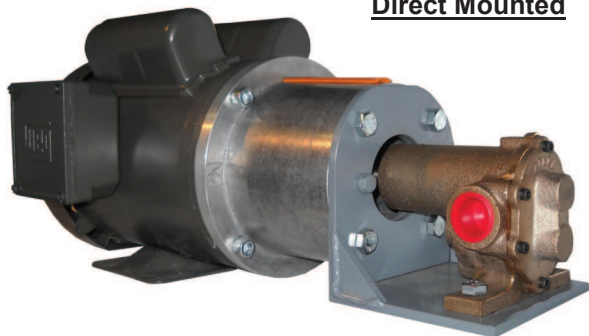
Our newest Bronze Gear Pump incorporates state of the art technology into the 'tried and true' performance of the industry standard all bronze Model LOS positive displacement gear pump. The new Model LOM includes environmentally friendly Federalloy™ cast bronze, an integral mechanical shaft seal, sleeve bearings and a keyed drive gear.



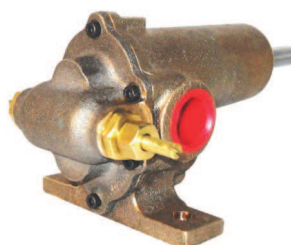
Standard Features and Benefits

- ✓ Keyed Drive Gear -Operating Pressure to 150 PSI, Higher Continuous Torque for High Viscosity Materials
- ✓ Ertalyte™ Sleeve Bearings -Long Life, Broad Material Compatibility, FDA Compliant
- ✓ Federalloy™ Bronze Cast Body and Cover is Lead -Free and meets NSF Regulations for Leaching Copper and Bismuth
- ✓ 416 Stainless Steel Drive, Idler Shaft and Seal Retainer
- ✓ John Crane™ Type 2106 Viton™ Mechanical Seal -No Leak Operation
- ✓ Plated Steel Socket Head Cover Screws -No Stretching for Higher Pressure Applications
- ✓ 200-1800 RPM Operating Range for Accurate Control of Pumped Material

Direct Mounted



Relief Valve Option



Application and Operation

- ✓ 3 Sizes- 1/2", 3/4" and 1" NPT Ports
- ✓ Flows to 18 GPM
- ✓ Bi-Directional Operation
- ✓ Temperature to 350 F
- ✓ 1/2" Shaft Diameter
- ✓ Two Hole Base Mount

Options

- ✓ 25-150 PSI Adjustable Relief Valve
- ✓ Rulon™ 641 Sleeve Bearings for Temperatures above 180 F
- ✓ Base and Direct Mounted Pump Systems

Uses

Adhesives, Glue
Alcohols
Ethylene Glycol, Anti-Freeze
Fuels-Petrol, Diesel, Kerosene
Glycerines
Heating Oils
Inks
Molasses
Salt Brine
Sea Water
Solvents
Syrups
Vegetable/Cooking Oils
Vinegars
Water-Tap, Grey, Soapy
Weed Killers

Markets

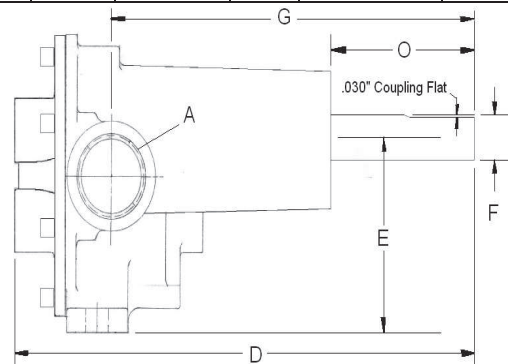
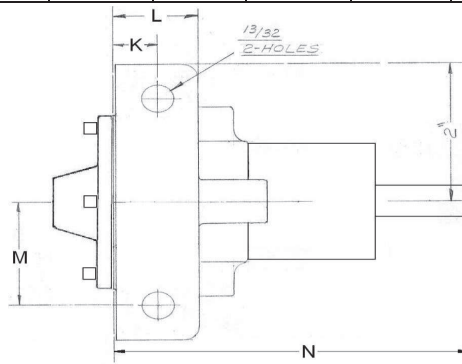
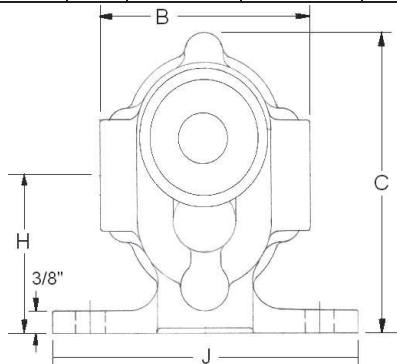
Agriculture-fertilizers, pesticides
Automotive-coolants, lubricants
Book Mfg-adhesives, glue
Construction & Mining-lubricants, fuels, coolants
Filtration System Pumps-portable, stationary
Food & Beverage-syrups, additives, oils
Furniture-adhesives, glue
Institutional (Hospitals, Schools)-Boiler feed pump
Machine Tool-coolant & lubricant circulation
Marine-bilge pump, fresh water
Mills-coolants, lubricants
Municipalities-liquids transfer
Power Plants & Utilities-coolants, lubricants, fuels
Printing-inks, solvents
Processing Plants-speed variable material transfer
Refineries-liquid transfer



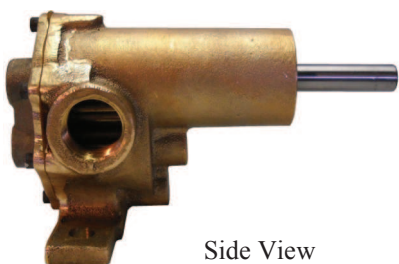
LOM Performance and Sizing Data

Dimensions

MODEL	Port	Body Width	Body Height	Overall Length	Mount to Shaft CL	Shaft Dia	Port CL to Shaft End	Mount to Port CL	Base Mount Width	Mount Hole Position	Base Mount Depth	Foot Mount Holes	Base Mount Rear to Shaft End	Shaft Extension
	A	B	C	D	E	F	G	H	J	K	L	M	N	O
4LOM	1/2"	2-7/8"	4-1/16"	6-5/16"	2-21/32"	1/2"	4-29/32"	2-1/16"	4-1/8"	17/32"	1-1/32"	1-1/2"	5-1/2"	1-7/8"
6LOM	3/4"	2-7/8"	4-1/16"	6-3/4"	2-21/32"	1/2"	5-1/4"	2-1/16"	4-1/8"	17/32"	1-1/32"	1-1/2"	6"	1-7/8"
8LOM	1"	3"	4-1/16"	7-1/4"	2-21/32"	1/2"	5-7/16"	2-1/16"	4-1/8"	3/4"	1-5/16"	1-1/2"	6-1/4"	1-7/8"



Performance tested with 70 F Water. The viscosity and specific gravity of other fluids will vary results. Please contact factory for applications with estimated pressure above those listed. Our positive displacement gear pumps have excellent suction characteristics and are self priming when wetted, with up to 20' lift dependent on vapor point of volatile liquids. For vertical suction lift, should pump run dry between uses, re-wet pump or use foot valve. Pump flow can be varied by varying input speed with pulleys, a gear reducer, or electric motor inverter (VFD). Never side load pump drive shaft, use a jackshaft/bearing arrangement.

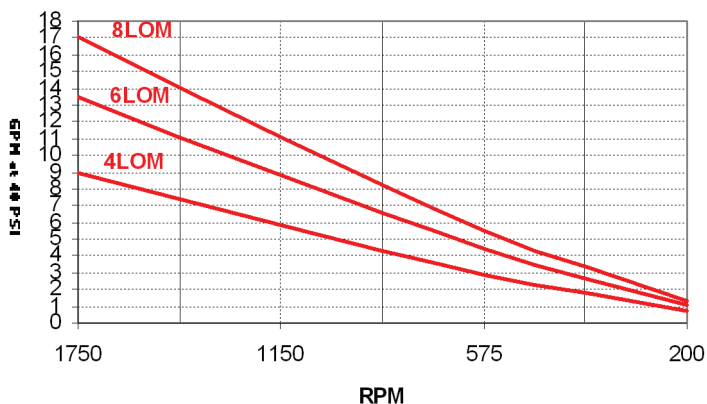


Side View

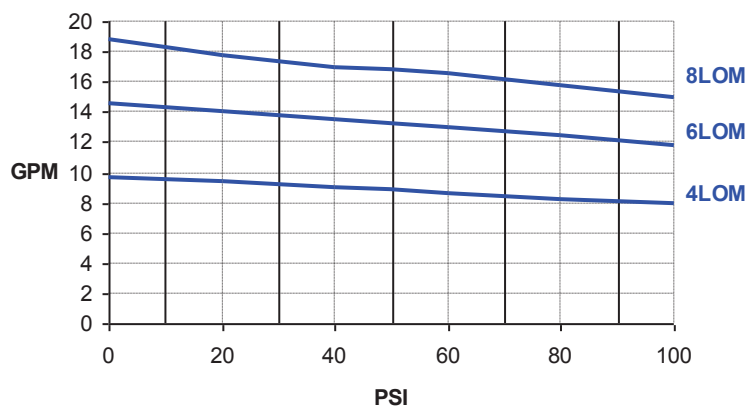


Front View

LOM RPM Operating Range



LOM Pump Flow Curve - 1750 RPM



SHAFT SPEED	PUMP MODEL	NPT Ports	GPM/100 RPM	~ CIR	0 PSI		20 PSI		40 PSI		60 PSI		80 PSI		100 PSI	
					GPM	HP	GPM	HP	GPM	HP	GPM	HP	GPM	HP	GPM	HP
1750 RPM	4LOM	1/2"	0.556	1.28	9.7	1/2	9.4	1/2	9	3/4	8.6	1	8.2	1	7.9	1 1/2
	6LOM	3/4"	0.836	1.93	14.6	1/2	14	1/2	13.5	1	13	1	12.4	1 1/2	11.8	1 1/2
	8LOM	1"	1.070	2.47	18.8	1/2	17.7	3/4	17	1	16.6	1 1/2	15.8	2	15	2
1150 RPM	4LOM	1/2"	0.556	1.28	6.6	1/4	6.2	1/4	5.9	1/3	5.6	1/2	5.4	3/4	5.2	3/4
	6LOM	3/4"	0.836	1.93	9.6	1/3	9.2	1/3	8.8	1/2	8.5	1/2	8.2	1	7.7	1
	8LOM	1"	1.070	2.47	12.4	1/3	11.6	1/2	11.1	3/4	10.9	1	10.3	1	9.8	1 1/2
575 RPM	4LOM	1/2"	0.556	1.28	3.2	1/4	3	1/4	2.9	1/3	2.8	1/3	2.7	1/3	2.6	1/2
	6LOM	3/4"	0.836	1.93	4.8	1/4	4.6	1/4	4.4	1/3	4.2	1/3	4	1/2	3.8	1/2
	8LOM	1"	1.07	2.47	6.2	1/4	5.8	1/4	5.5	1/3	5.3	1/2	5.1	1/2	4.9	3/4