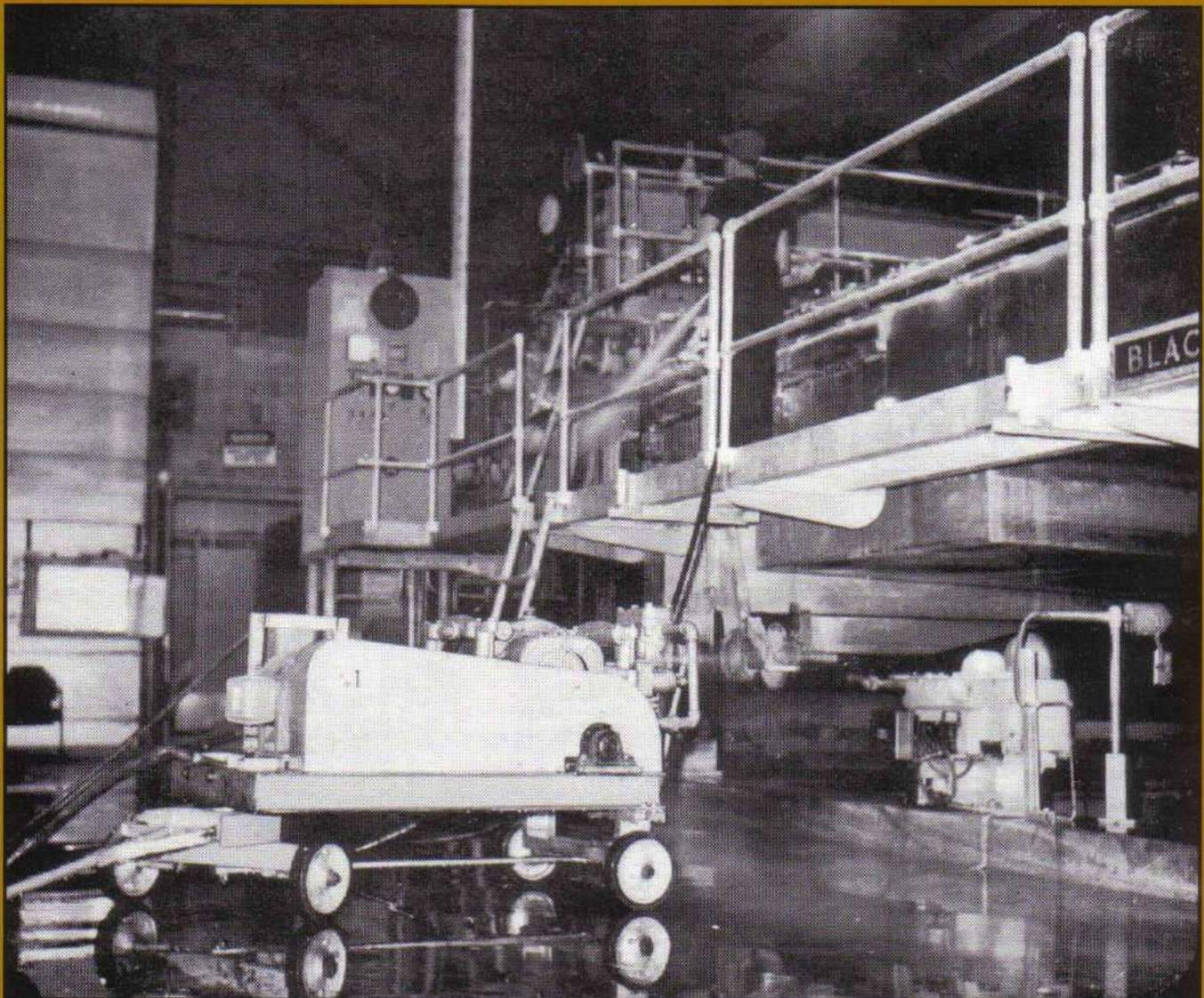


---

# REPORT TO PAPER MILLS

---

This report is to inform paper mill men how leading mills are using the Hydro Silica High Pressure Air-Water Cleaner to solve their many cleaning problems. Mill superintendents everywhere tell us of their success with the Hydro, and others have asked for an up-to-date report of the various cleaning jobs other mills are doing with their Hydro. To many it is an indispensable piece of equipment. Our records show that 287 paper mills have Hydro equipment - if your mill is not one of these, study the photo illustrations to determine if this method of cleaning might help you in solving your maintenance problems. The photos show only a few of the many applications in a paper mill, however this report will list many more usages, as well as furnishing a list of leading mills with Hydro installations.



**HYDRO SILICA CORPORATION • GASPORT, NEW YORK 14067**

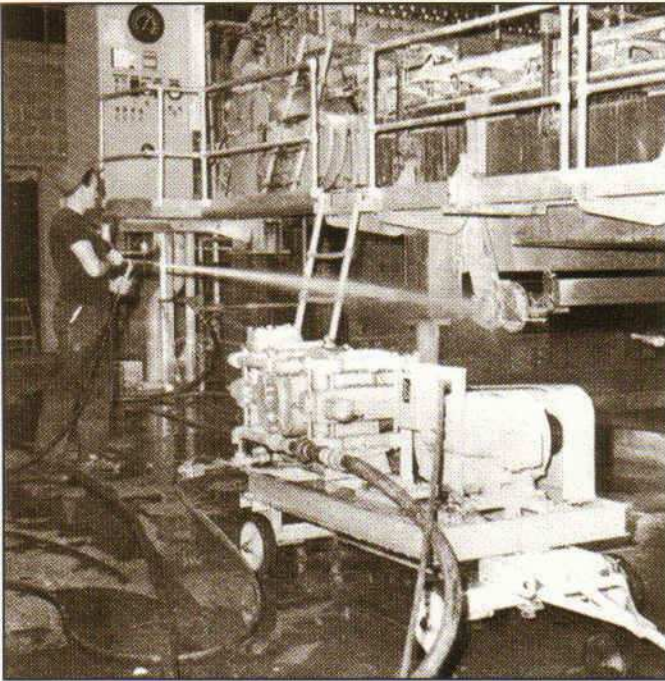
P.O. BOX 311

Phone 716-772-2651

FAX 716-772-2555

# THESE ARE TYPICAL CL IN MOST PAPER MILLS

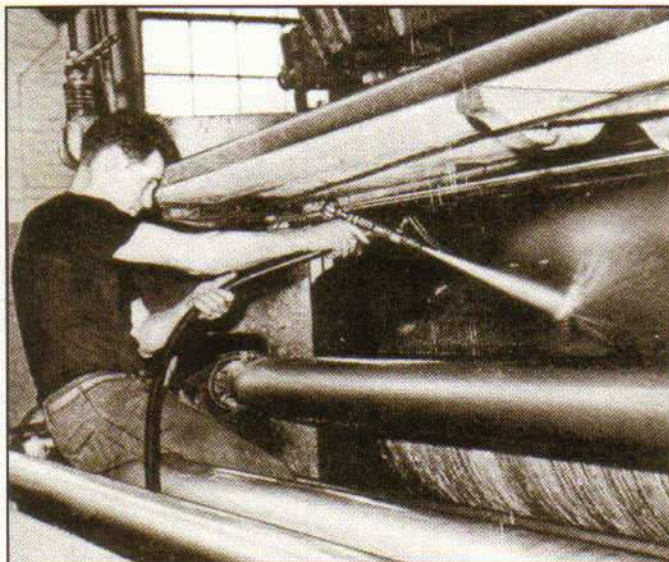
The photos shown represent only a portion of the cleaning jobs done in many mills. Many of the mills report savings up to 90% of their previous cleaning costs. These savings quickly pay back the entire initial cost of the Hydro, since labor, water and chemical costs are reduced drastically. It is significant that the Hydro is reported to be of great value in cleaning operations in so many areas of the paper mill. We list here only the most popular uses, however a total of over a hundred different cleaning operations have been reported.



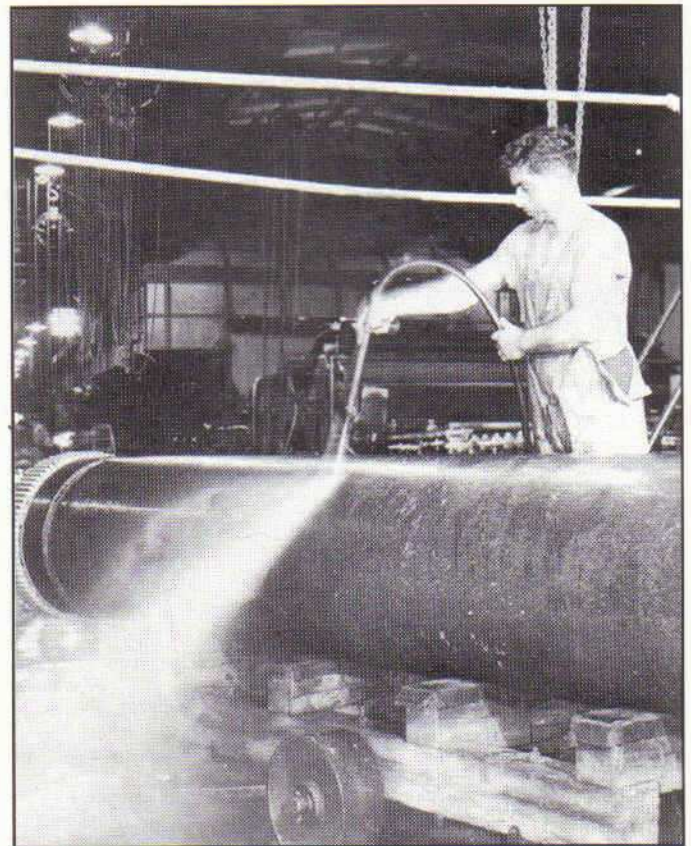
CLEANING PAPER MACHINE

## CLEANING MACHINERY

Your maintenance personnel will scour places that you previously found impossible to clean without tearing down the machine. Any surface that is now being cleaned slowly and expensively by hand, or by low-pressure liquid streams, will be cleaned quickly at a small fraction of previous cost. The Hydro-Silica method has solved the most expensive and troublesome problem in a paper mill - cleaning of equipment.



CLEANING PRESS ROLLS



CLEANING COUCH ROLL

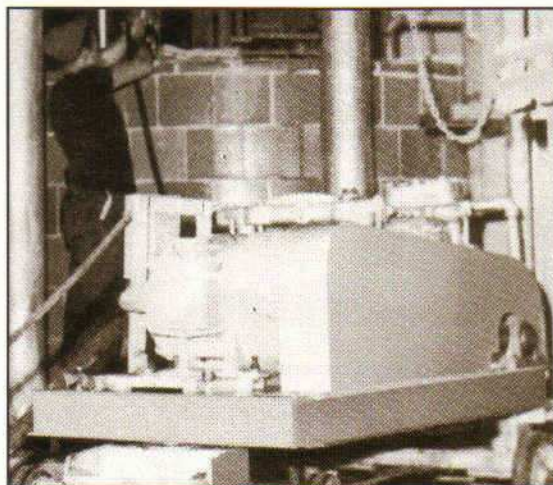
## NO JOB IS TOO HARD

Any material that clings to machinery or other equipment is scoured off by the Hydro in a fraction of the time needed by other methods.

# CLEANING JOBS PERFORMED

## The most popular uses are:

- Paper Machines
- Piping
- Screen Boxes
- Vacuum Press Rolls
- Decker Cylinders
- Couch Rolls
- Stack Chests
- Beater Vats
- Dandy Rolls
- Felts
- Floors and Walls
- Press Rolls
- Machinery
- Beaters
- Tile Chests



CLEANING TILE CHESTS



CLEANING FLOORS

## CLEANING PIPING

78% of the paper mills report using their Hydro Silica Equipment for cleaning various piping such as stock lines, vat lines, white water lines, etc. - diameters 3 in. to 16 in. The nozzle pulls itself through as it cleans - does a good job at the end of 200 ft. of hose, after turning a right angle corner.



CLEANING PIPING

## SAVINGS TO YOU

### Saves Labor

The Hydro saves labor costs by cleaning 10 to 15 times faster than previous methods.

### Saves Water

High-pressure cleaning, besides cutting down the time to clean a roll, also makes a big saving in water required. You know what water costs your mill. Pressure is cheaper.

### Saves Chemicals

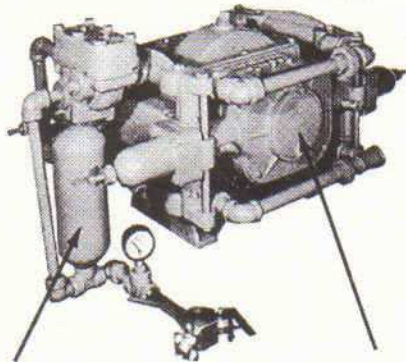
Many cleaning jobs that formerly needed chemicals are now done much faster without. Aerated water at high pressure has far higher cleaning efficiency than water only.

## YOUR BEST GUARANTEE OF DEPENDABILITY

One of the greatest features of the Hydro is that it is built to last. Many Hydros have been in service for twenty-five years and longer. Built with extra strength throughout, so that the buyer can look forward to many years of service, trouble free and at a trifling upkeep cost.

# THE SAFETY STANDARD of the Hydro Silica Cleaner is equal to its Operating Efficiency

Manifolds 41% heavier than on cleaning pumps of similar type, and secured by 4 bolts instead of 2—giving more than double insurance against warping, and gaskets blowing out.



ASME code pressure tank, burst-tested at 5000 psi—5 times the maximum working pressure of the Hydro Silica pump, more than meeting ASME pressure vessel code requirement.

1/4-inch larger diam. Timkens on the main drive crank-block bearing—assuring you of still better dependability for service without interruptions, and longer life of the bearing without replacement.

This is the pump that meets the most exacting safety requirements when using full 1000 psi pressure for your toughest cleaning jobs.

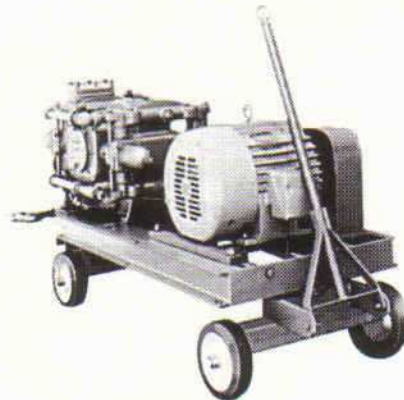
You're sure of RELIABLE equipment from Hydro Silica Corporation, originators of air-water high pressure cleaning, inventors of the HS.Venturi gun used for most cleaning, and the HS self-propelling nozzle that cleans piping and tubing.

Other pumps of Scotch yoke type are similar in appearance to the Hydro Silica pump, but when you compare Safety at High Pressures you realize the difference.

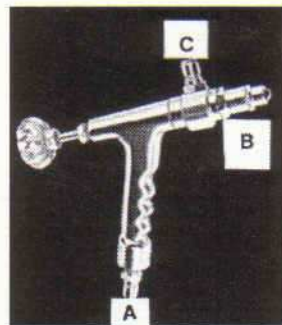
Designed and constructed with extra strength where needed the Scotch yoke type pump is reliable for high pressure service. It has fewer moving parts than other high pressure pumps—no crankshafts, connecting rods, or wrist-pins; no plunger caps or cylinder lining. No wear on the cylinder walls, as the plungers do not touch.

The Hydro Silica pump operates for years with trifling upkeep cost. Valves and packing are easy to get at for cleaning and adjustment. Packing is kept just tight enough to prevent leakage, by adjustment at end of cylinder.

A dependable piston-type automatic pressure controller keeps the pump delivering water at any pressure for which you set it.



Hydro Silica Pump with electric motor, mounted on a 4-wheel cart.



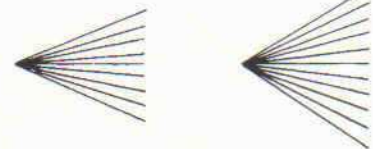
Hydro Pistol Grip Gun

Hydro Silica cleaning unit includes a gun that mixes air and water—at the instant of discharge.

How it works: Water at high pressure enters the gun at "A", passes through a small jet, discharges at the tip through a larger jet, "B". This creates a partial vacuum in the gun body, drawing air into the gun through opening "C".



Spreader Cone for fan spray



Gun can be shut off at any time without stopping the pump—the pressure controller's overflow valve automatically opens.

A stream exactly suited to each job is obtained by the Hydro Silica system's positive control over two factors:

(1) **Water Pressure.** The piston-type automatic pressure controller delivers water to the gun at the exact pressure needed, up to 1,000 psi.

(2) **Stream Pattern.** By a twist of the wrist, the operator can instantly get a wide cone for delicate equipment, or solid stream for hard cutting.

## CLEANING TUBING



The Hydro Silica TUBE CLEANING Nozzle, at the end of a high-pressure hose from the pump, pulls itself through the tube as it cleans.

**HYDRO SILICA CORPORATION • GASPORT, NEW YORK 14067**

P.O. BOX 311

Phone 716-772-2651

FAX 716-772-2555